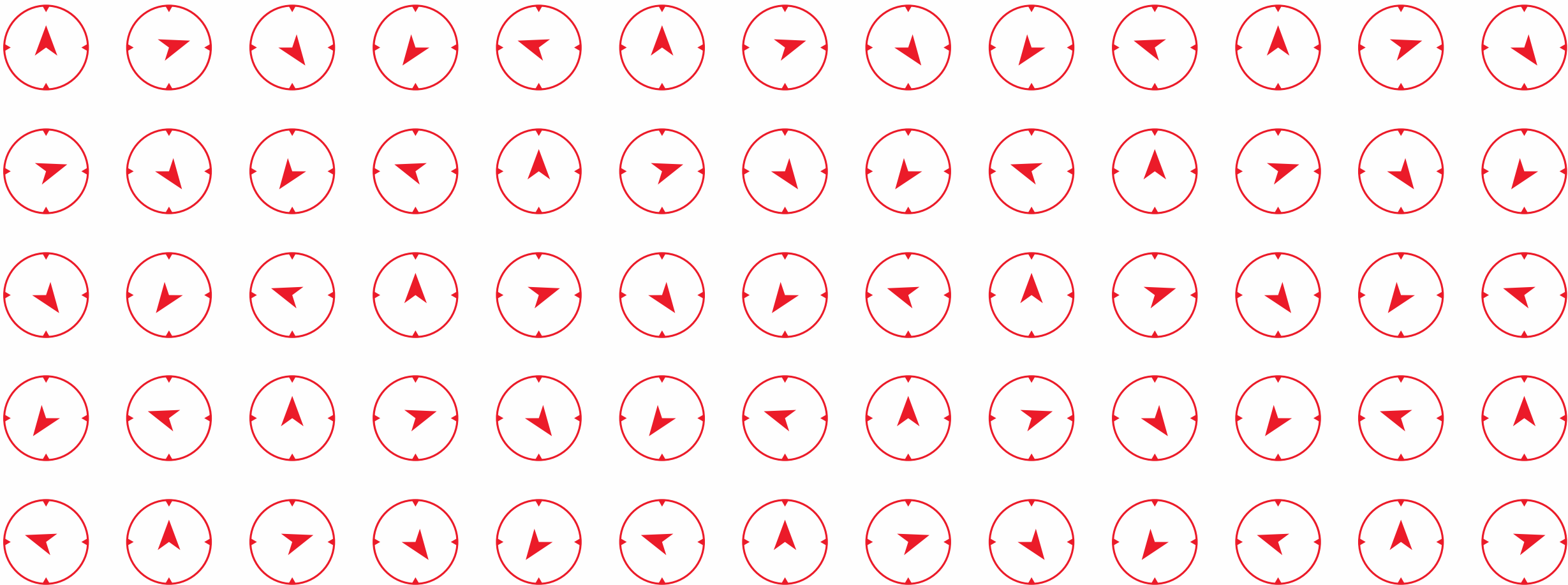


**SWISS POLAR
INSTITUTE**



SPI @ ETH & UZH

Information Event for Researchers

25 August 2022

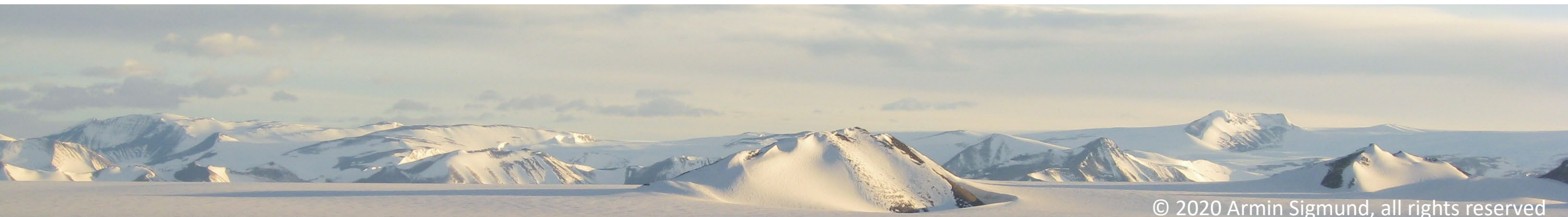
SPI Mission – Facilitate research of Swiss-based scientists at the 3 Poles of the Earth – the Arctic, Antarctic and high-altitude environments

Founded in 2016 as a **bottom-up partnership between institutions** (campus EPFL – from Nov'22@Alpole, Sion).

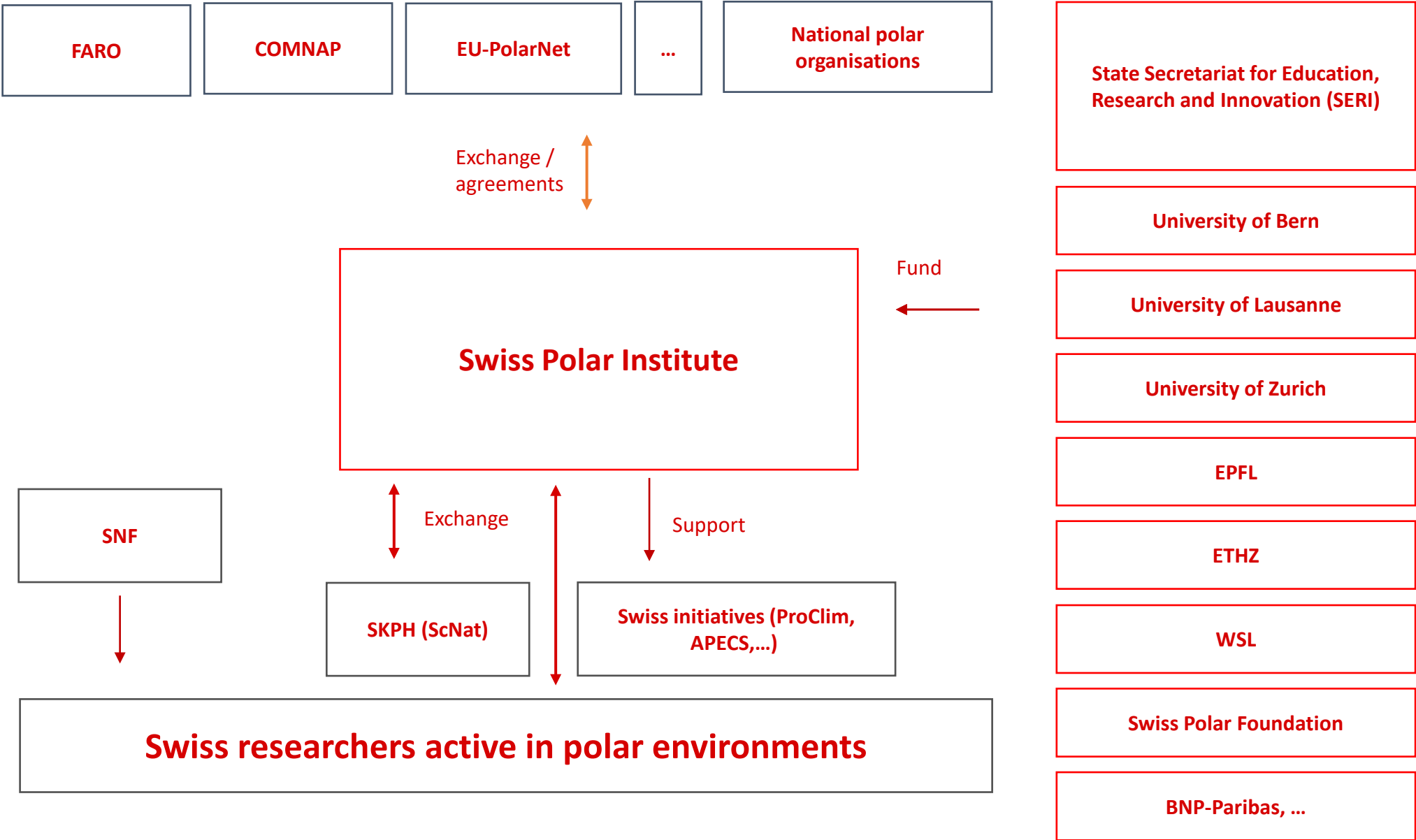
Independent foundation with status of “**Research facility of national importance**”.

Key principles

- ✓ **Complementarity** – Focus on unique services and funding
- ✓ **Agility** – Keep the capability to embrace new or short-term opportunities
- ✓ **Openness** – At the service of all scientists based in Switzerland
- ✓ **Fairness** – all selection processes by external panel of experts (peer review)



SPI IN THE SWISS AND INTERNATIONAL LANDSCAPE



How do we support your research? - Main measures to achieve the SPI mission

1. Funding towards logistics of researcher's projects
2. Facilitation of access to international polar research infrastructure and expeditions
3. Support of Early Career Researchers
4. Services (networking events, health & safety courses)
5. Polar research & society: national and international outreach, science – policy transfer



1. FUNDING OPPORTUNITIES

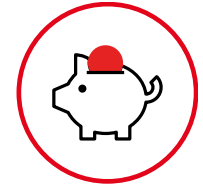


1. Funding towards logistics of researcher's projects

- ✓ **Exploratory grant** – Up to CHF 75'000 to kick-start new collaborations or undertake fieldwork
Funding: travel, logistics, small equipment/consumables, (limited) post-expedition work, ...
Proposal deadline: 19 October 2022 (annual call)
- ✓ **Technogrant** – Up to CHF 75'000 for technology development to serve research in polar regions – reaching out towards new competences and private sector
Funding: development costs, material/consumables, testing in the field, ...
Proposal deadline: 19 October 2022 (annual call)
- ✓ **SPI Flagship Initiatives** – large multi-annual campaigns (up to 5 years, multi-disciplinary, fieldwork, logistics, data management and outreach)



1. FUNDING OPPORTUNITIES



Recent examples

- ✓ Lisa Bröder, «Mackenzie Delta Lake sediments – Records of recent permafrost thaw?», SPI EG, 2021-2022
- ✓ Isabelle Gärtner-Roer, «Rock Glacier Dynamics on Disco Island», SPI EG, 2020-2023
- ✓ Thomas Stastny, «Autonomous Deployment of GNSS Stations on Polar Outlet Glaciers Using a Long-Range Tilt-wing UAV», SPI TG, 2021-2022
- ✓ Daniel Farinotti, «Airborne Ice Radar of ETH-Zurich (AIR-ETH), SPI TG 2022-2024



PAMIR

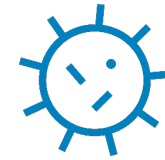
From ice to microorganisms and humans:
Toward an interdisciplinary understanding of
climate change impacts on the Third Pole.

<https://pamir-project.ch>

Principal Investigators:

Dr Francesca Pellicciotti, WSL

Prof Martin Hoelzle, UniFr



Microbial
Biogeochemistry

Prof Tom Battin,
EPFL



Glaciers, Snow
and Hydrology

Dr Francesca
Pellicciotti, WSL



Mountain
Permafrost

Prof Martin Hoelzle,
UniFr



Cryospheric
Hazards

Dr Simon Allen, UZH
and UNIGE



History of Glacier
Science

Prof Christine Bichsel,
UniFr



Climate and
Environmental
History

Prof Margit Schwikowski,
PSI and UniBe

Greenlandic Fjord ecosystems in a changing climate:
Socio-cultural and environmental interactions

<https://greenfjord-project.ch/>



Copyright Blake Matthews

GreenFjord Programme PI:
Prof Julia Schmale, EPFL



Dr Lisa Bröder,
ETHZ



Prof Andreas Vieli,
UZH



Prof Laine Chanteloup,
UNIL



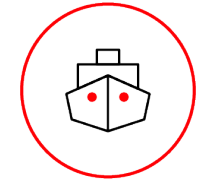
Prof Julia Schmale, EPFL



Prof Samuel Jaccard, UNIL



Prof Loïc Pellissier,
WSL/ETHZ
Prof Kristy Deiner,
ETHZ



2. Facilitation of access to international polar research infrastructure and expeditions

✓ International institutional partnerships

- AAD, Australia (incl. Mertz Fellowship); Centre d'Etudes Nordiques, Quebec, Canada
- *Under finalisation: NIS, Greenland (incl. Koni Steffen Grant); NIPR, Japan; IPEV, France; AWI, Germany*

Contact us if you need support with access to infrastructure of the above polar institutions!

✓ International expeditions

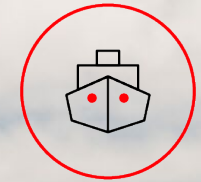
- SPI expeditions (Antarctic Circumnavigation Expedition 2016-17; Arctic Century 2021)
- International opportunities (scientific collaboration in MOSAIC, Vendée Globe)

Contact us any time if you see unique international opportunities and need support!

- ### ✓ Collaboration in international research infrastructure coordination (European Polar Board, COMNAP, FARO, EU-Polarnet 2) - contact us any time if you have related questions!



2. FACILITATION OF ACCESS TO POLAR INFRASTRUCTURE



Recent examples

- ✓ **Arctic Century Expedition 2021:** Pls: Loïc Pellissier, Zamin Kanji, Heini Wernli, Gabriela Schaepman-Strub – 7 on-board participants ETHZ/UZH
- ✓ **Vendée Globe measurement campaign 2022-2025,** PI Nicolas Gruber

3. SUPPORT FOR ECRS



3. Support for Early Career Researchers

- ✓ Polar Access Fund - Up to CHF 20'000 for own ECR fieldwork (PhD or max 3 years after PhD)
Funding: travel, logistics, small equipment/ consumables, ...
Next call December 2022
- ✓ **Field and Summer schools** - Contribution to participation in field schools and training programmes for MSc and PhD students. Continuous - apply anytime to SPI – see list
- ✓ **Dedicated events and workshops**, close collaboration and support to **APECS** (excursion coming up soon!)



3. SUPPORT FOR ECRS

Recent examples



- ✓ Boris Ouvry «Morphological evolution of ice cliff backwasting in relation to supraglacial channel incision on Satopanth glacier», PAF, 2022-2023
- ✓ Lisa Leist and Annabel Payne with PAF 2022 projects on tracers in the Davis Straight and Beaufort Gyre
- ✓ Anne Sofie Sondergaard «Constraining ice cap extents during past interglacials ...», PAF 2022
- ✓ International Summer School in Glaciology, University of Alaska Fairbanks
- ✓ Juneau icefield research program (traverse), University of Maine and University of Alaska Southeast

© 2021 Gerald Raab, all rights reserved



4. SERVICES TO THE COMMUNITY



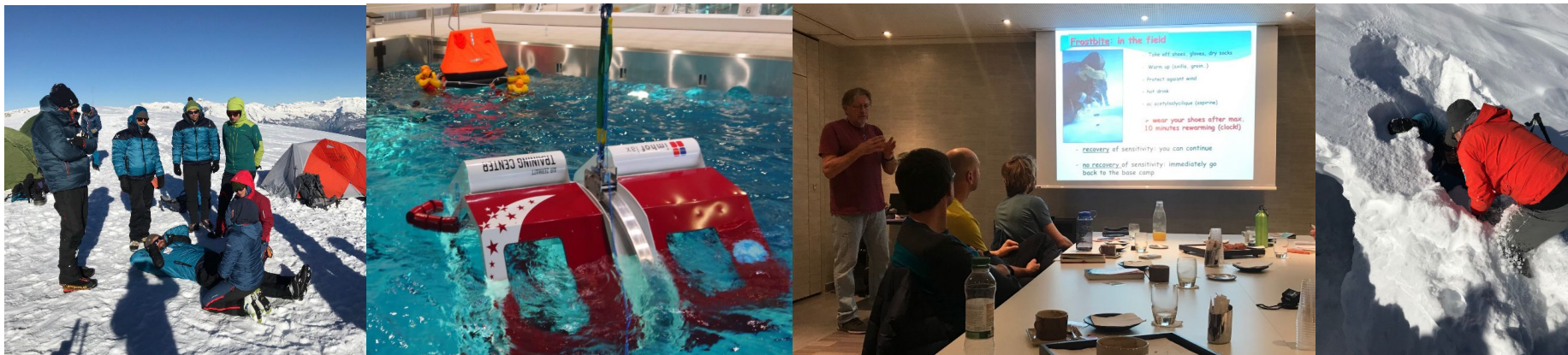
4. Services

✓ Health and Safety

- Courses on health and safety in polar regions
Next courses: 11-12 November 2022 & spring 2023 - **registration open on SPI website**
- Field pharmacies **upon request** (reserve early!)
- Link to telemedicine providers and preparation of health checks
- Partnership with Air Zermatt for helicopter safety courses

✓ Events and workshops

- Annual conference: Swiss Polar Day – 2 September 2022 in Bern - **registration open on SPI website**
- Dedicated topical events



SWISS POLAR DAY

2022

Present
your latest field
work and projects
during the open
forum!

WHEN

Friday 2 September 2022
from 10:30 to 16:45
Followed by a networking drink

WHERE

University of Bern
Exakte Wissenschaften
Building

PROGRAMME & REGISTRATION

swisspolar.ch/events



Access the registration
by scanning
the QR code

STAY UP-TO-DATE

www.swisspolar.ch
@SwissPolar



SWISS POLAR
INSTITUTE

The annual conference for the Swiss polar and high-altitude research community...

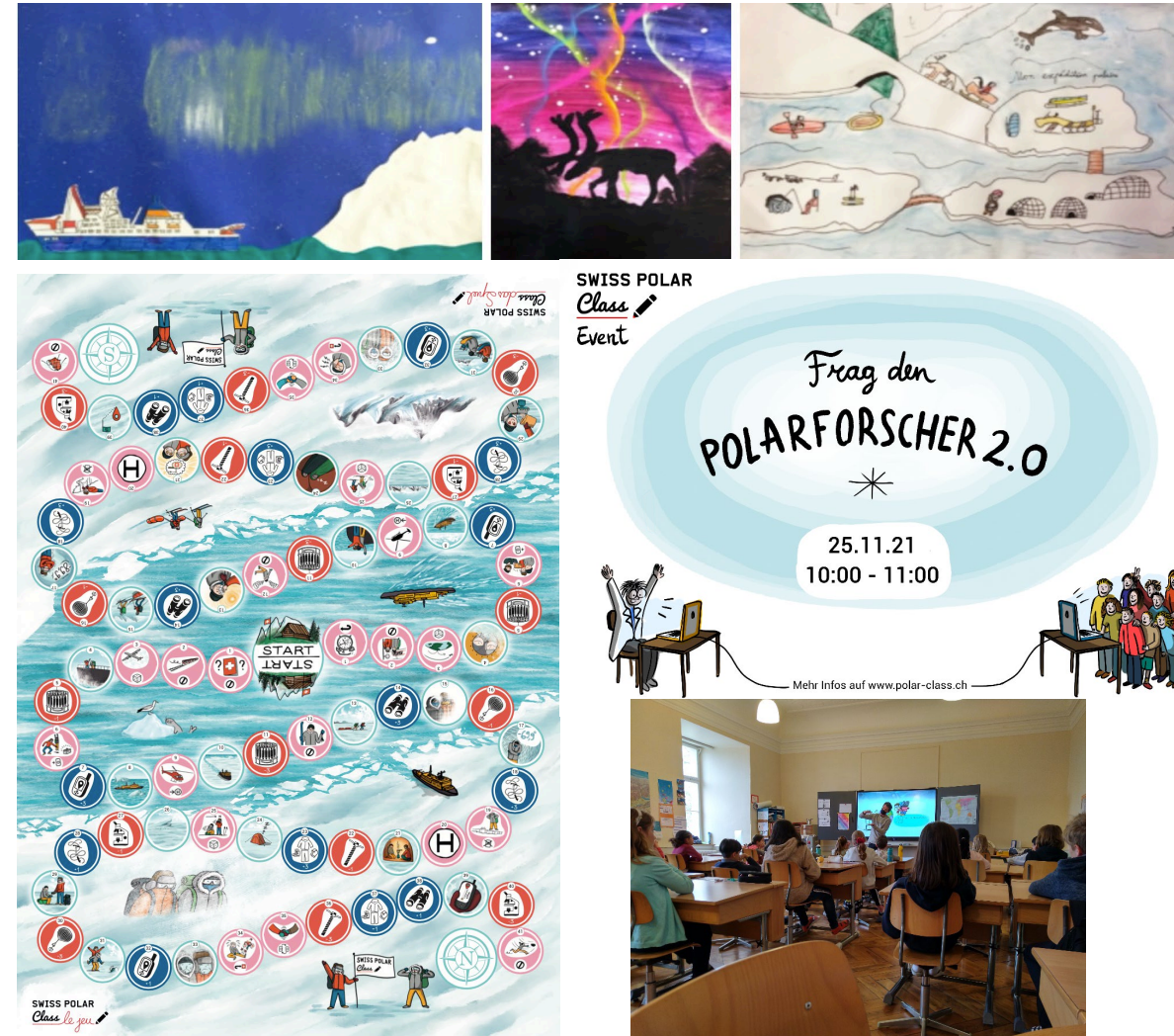
... to enlarge your scientific horizon with talks by international and Swiss experts, get an overview of the current Swiss-led initiatives, find out about new opportunities and catch up with your network and colleagues from all fields

Speakers

- **Gianluca Rendina** 📍 HUGH BROUGHTON ARCHITECTS, LONDON
"Challenges of building in Antarctica
– experiences from a Swiss architect"
- **Horst Machguth** 📍 UNIVERSITY OF FRIBOURG
"Accelerating mass loss of Greenland
– firm and the shifting runoff limit"
- **Josephine Nymand** 📍 GREENLAND INSTITUTE OF NATURAL RESOURCES
"Scientific collaboration with Greenland
– opportunities and best practices"

5. National and international outreach & science – policy transfer

- ✓ **Collaboration with cultural actors** (e.g. museums and ProHelvetia) and science festivals/ university events
- ✓ **Swiss Polar Class:** Pedagogical programme for primary school children (in FR and DE)
 - Launch of «Swiss Polar Class: the game»
 - Launch of new theme: Humans in the polar regions
 - Monthly Swiss Polar Class lessons
 - Online “Meet a scientist” events





Science-Policy transfer

- ✓ Relay for **Swiss polar research** towards EDA, SBFI and SKPH on Antarctic Treaty, SCAR, Arctic Council, IASC, ASM
- ✓ Active participation in **European polar networks to ensure a voice at European level** (e.g. European Polar Board, EU PolarNet)



How to stay informed & engage with SPI and the Swiss polar research community

- ✓ Follow SPI on Twitter: **@SwissPolar** for all news and calls for proposals.
- ✓ Check out www.swisspolar.ch – News, events, funding, fieldnotes and more!
- ✓ Drop us a line if you would like to be included in our contact list for our **newsletter** announcing new opportunities/ events and please keep us informed of your recent research and publications.



Thank you very much for your attention!



PORTFOLIO OF ACTIVITIES



Expeditions

- Arctic Century 2021
- ACE 2016-2017



Funding

- SPI Flagship Initiatives
- Polar Access Fund
- SPI Exploratory Grants
- SPI Technogrants
- International collaboration (MoUs, grants, etc.)



Health & safety

- Courses (with GRIMM)
- Field pharmacies on loan
- Access to telehealth



Events

- Thematic workshops
- Annual conference
- Representation of Switzerland in COMNAP, FARO, etc.



Outreach

- PoIARTS
- Swiss Polar Class
- Museums (ad-hoc)



Training

- Field schools
- Events for ECRs
- Support to APECS