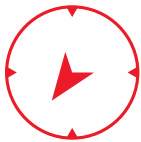
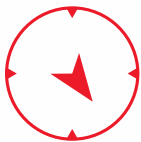


**SWISS POLAR
INSTITUTE**

SPI News



Open Calls for proposals

- SPI Technogrants and SPI Exploratory Grants – Deadline 6 October 2023
- Mertz Fellowship – Deadline 31 October 2023 (in partnership with the Swiss Embassy in Australia and the Australian Antarctic Division)
- Other opportunities currently open: INQ access 2024

To be published soon

- PolARTS – open from October 2023 to January 2024 (in partnership with Pro Helvetia)
- Polar Access Fund – open from mid-November 2023 to mid-January 2024



Grants for the participation in polar field and summer schools

- Unique opportunity for ECRs
- Up to CHF 1'500.- for registration fees, transport, accommodation, etc.
- Call open all year round
- List of previously funded & eligible courses on SPI website
- Contact us to check eligibility of other courses
- Process and conditions on SPI website



Health and Safety

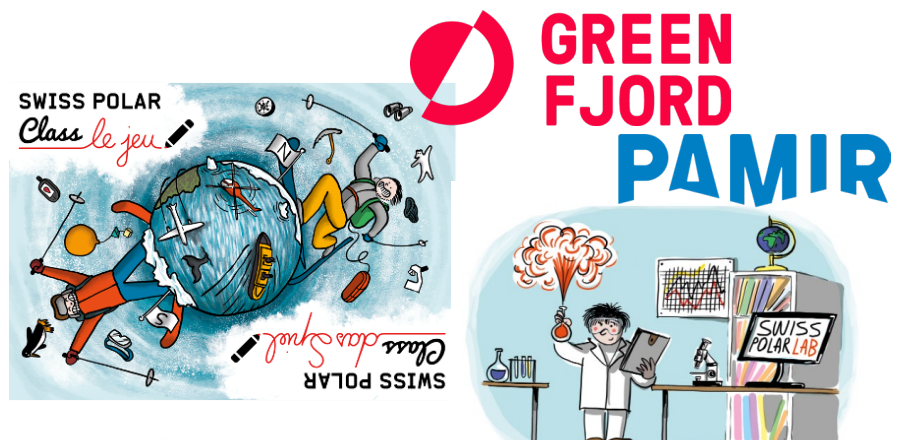
- Good attendance in all trainings – always fully booked
- Upcoming health and safety training for fieldwork – 3 and 4 November 2023
- Customised field pharmacies available for trained field parties
- Novelty in June 2023: Technical training for glaciated terrain



© 2023, Samuel Owen, all rights reserved

Swiss Polar Class

- Free educational programme for primary schools, in FR and GER
- Online content
- Events & Activities



The logo features a red circle with a white diagonal line. Below it, the text 'GREEN FJORD' is in red and 'PAMIR' is in blue. To the left, there's a cartoon illustration of a person in a blue suit and orange hat, holding a magnifying glass over a globe. To the right, a cartoon scientist in a white lab coat stands next to a desk with a computer monitor displaying 'SWISS POLAR LAB'.

Below the logo are five document thumbnails:

- Fiche planification
- Fiche théorie
- Fiche élève
- Fiche solution
- Fiche annexe




SWISS POLAR Class Event

Frag die POLARFORSCHERIN!

17.05.2023
10:00 - 11:00

Mehr Infos auf www.polar-class.ch

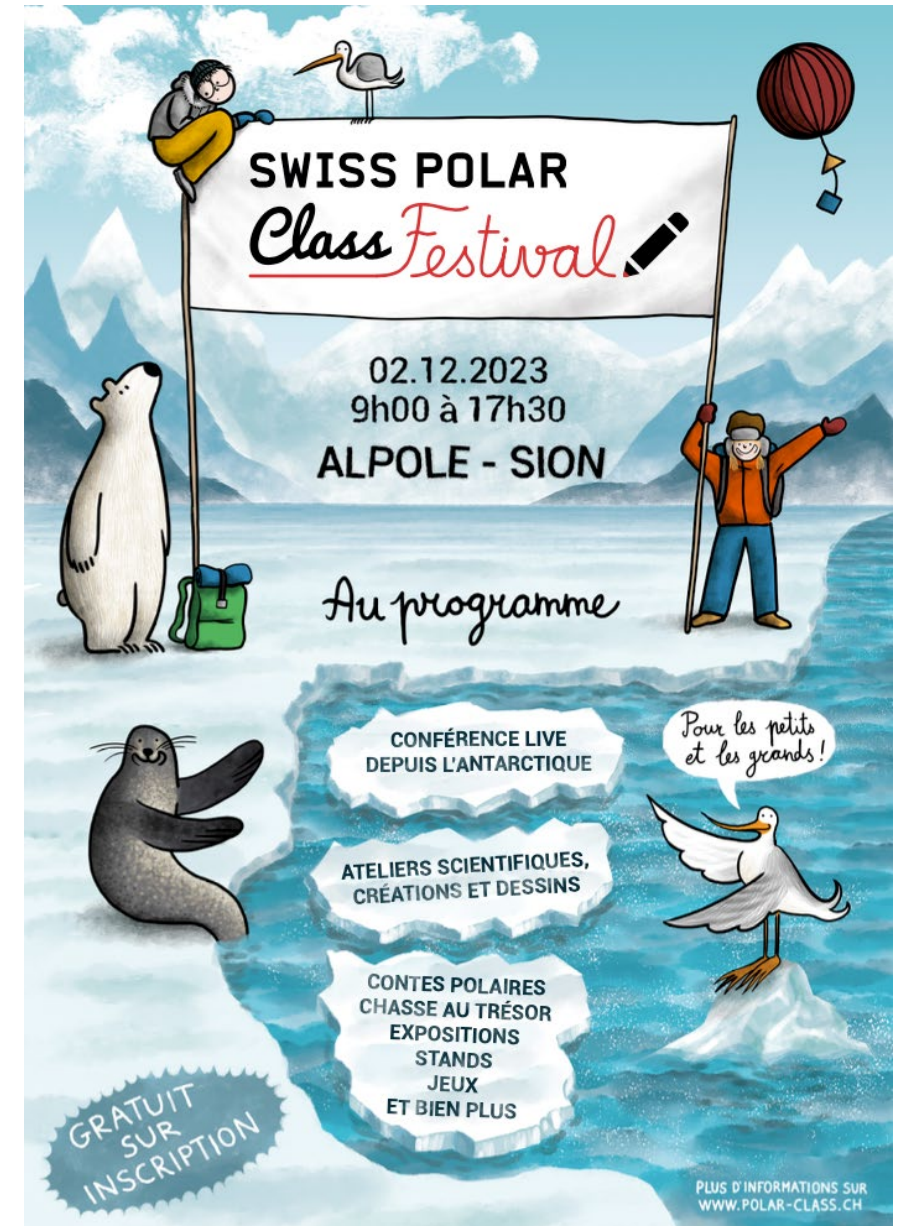
CONCOURS DE DESSIN
2023



www.polar-class.ch

Swiss Polar Class Festival

- 02.12.2023 - from 9:00 to 17:30
- In Alpole, Sion
- For families and children
- Activities, exhibition, conference, games, ...
- Science space – contact us if interested
- Launch communication – 01.10.23
- Meet us in the corridor!



SPI NEWS

SPI communication

#ClimateChange #FundingOpportunities
#FieldTraining #Community #Outreach
#PolarScience
#Fieldwork #SwissResearchers #ECRs #HighAltitude

- Projects Map - Publications & datasets
- Share with us through our channels
Newsletter

- Subscribe from our homepage
- Email us your news to be featured
in *News from our network*



swisspolar.ch/projects

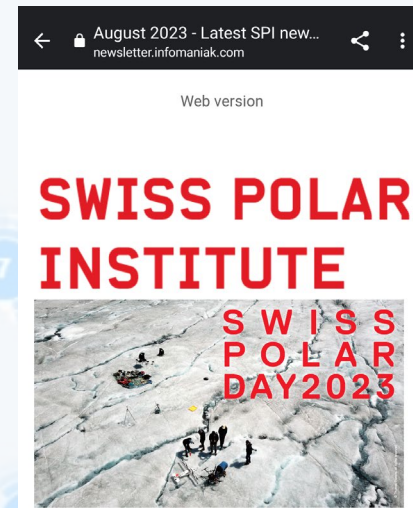


@swisspolarinstitute



@SwissPolar

SWISS POLAR
INSTITUTE



News from our network

2023 SCAR Visiting Scholar applications open

SCAR Visiting Scholarships are for mid- to late-career stage scientists and academics (at least 5 years after completing their PhD) who are involved in Antarctic research, providing the opportunity for them to undertake a short-term visit (1 to 4 weeks) to an institute(s) in another SCAR member country, to provide training and mentoring.

The closing date for applications is Wednesday 30 August 2023.

[MORE INFO](#)

Call for proposals – DFG SPP 1158 Antarctic Research

SwissPolarInstitute
@SwissPolar

Join us for the Swiss #Polar Day: Highlights include keynotes by @Team_Schmutz & @RuzicaDadic + an overview of collaboration opportunities with @Institutnord and @kyokuchiken!

15.09.

10:30-16:45 &

Alpole @EnergypolisVS @EPFL_en

Register swisspolar.ch/event/swiss-po...

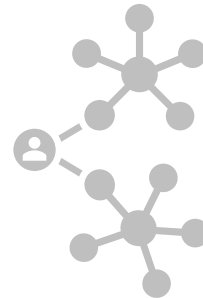


University of Zurich and 9 others

16:00 · 26 Jun 23 · 3'606 Views

View post activity

10 Reposts 3 Quotes 14 Likes 1 Bookmark



SPI NEWS

For your diaries

23.09. EXPLORA 2023
@Uni Fribourg



La grande fonte –
Comment mesure-t-on la
disparition des glaciers?

🕒 11h00 – 18h00

📍 Planète Terre

📍 Pérolles

Come and meet us!



Internship opportunity: Join the SPI Team

The Swiss Polar Institute has an opening for a 9-months internship (80%-100%) in Sion, starting on 1 November 2023. It aims to offer a “behind-the-scenes” view of a science organisation and the management of science programmes. Aims of the internship Tasks Your profile What we offer How to apply Should [...] [READ MORE](#)

Apply by 01.10.2023



11.10.2023

@Le Dome Planetarium, Sion



03.-04.11.2023

Health & Safety Training



09.11.2023 @EPFL, VS

SWISS POLAR
Class Festival

02.12.2023 @Alpole, Sion

Families welcome!

SWISS POLAR
INSTITUTE

SPI in International Bodies

- SPI represents Switzerland at COMNAP (Council of Managers of National Antarctic Programs) and FARO (Forum of Arctic research operators)
- SPI represents Switzerland in Standing Committee on Antarctic Data Management (SCADM) and Arctic Data Committee (ADC)
- Provides guidelines and defines best practices on many topics
- COMNAP info: Avian Influenza in Antarctica
- We are happy to provide you with updates and make use of these networks for your science



Bilateral workshop with AWI

- In the context of the recently signed MoU between the SPI and the AWI
- In-person workshop at AWI in Bremerhaven on 6 December 2023
- Aim: establish joint research projects of Swiss and AWI-based researchers to be funded through the usual SPI calls, Swiss or German funding sources (including the numerous collaboration possibilities foreseen by SNF and DFG) or to take place within the realm of larger international initiatives



Development for 2025-2028

- Application for a second round of federal funding submitted in June 2023
- Covers the period 2025-2028
- Application takes place in a constrained financial environment!
- The outcome will greatly determine SPI's future funding ability and support services...
- ... so make some noise for polar and high-altitude research



Priorities for 2025-2028

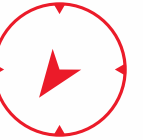
- Maintaining existing grant programmes at SPI
- New call for SPI Flagship Initiatives scheduled for 2025 – exact format to be defined
- Participation in international polar initiatives such as the International Polar Year
- Strengthening of bilateral and international partnerships with polar actors
- Development of SPI services : support in polar logistics
- Technology at the service of cleaner polar science





Towards a greener SPI

Daniel Farinotti,
Science and Technology Advisory Board SPI



Polar research and its environmental impact

- SPI acknowledges the heavy environmental footprint of polar and high-altitude research
- Such a footprint is in obvious contradiction with the key messages delivered by the science community
- SPI wants to support a transition towards cleaner polar and high-altitude science



Your opinion matters!

- Before taking action on the matter, SPI would like to gather your view.
- Indeed, SPI would like to take actions with goals that are shared.
- The survey aims at identifying the domains that are seen as priorities and, possibly, obtain suggestions for directions in which to move forward.
- The survey should take 10-15 minutes to complete, and **you have the time now!**
https://www.surveymonkey.com/r/SPI_environment



Next steps

- If you have further thoughts on the matter, feel free to go back to the survey later, or drop a line the SPI Secretariat <secretariat@swisspolar.ch>!
- A report on the results will be published in early 2024
- Answers will feed into discussions of the SPI Science and Technology Advisory Board and be the basis for SPI's future actions and practices

