

Space
eXchange
Switzerland

Acquiring satellite data for research

Claudia Röögli

Head of scientific National Point
of contact for satellite data

University of Zurich

Swiss Polar Day 2024

12 Sept. 2024 – Fribourg

npoc@geo.uzh.ch



Funded by
Schweizerische Eidgenossenschaft
Confédération suisse
Confederazione Svizzera
Confederaziun svizra

Swiss Confederation

Federal Department of Economic Affairs,
Education and Research EAER
State Secretariat for Education,
Research and Innovation SERI
Swiss Space Office



Mission

Amplify the voices of the Swiss space ecosystem.

EPFL

ETH zürich



University of
Zurich ^{UZH}



Università
della
Svizzera
italiana

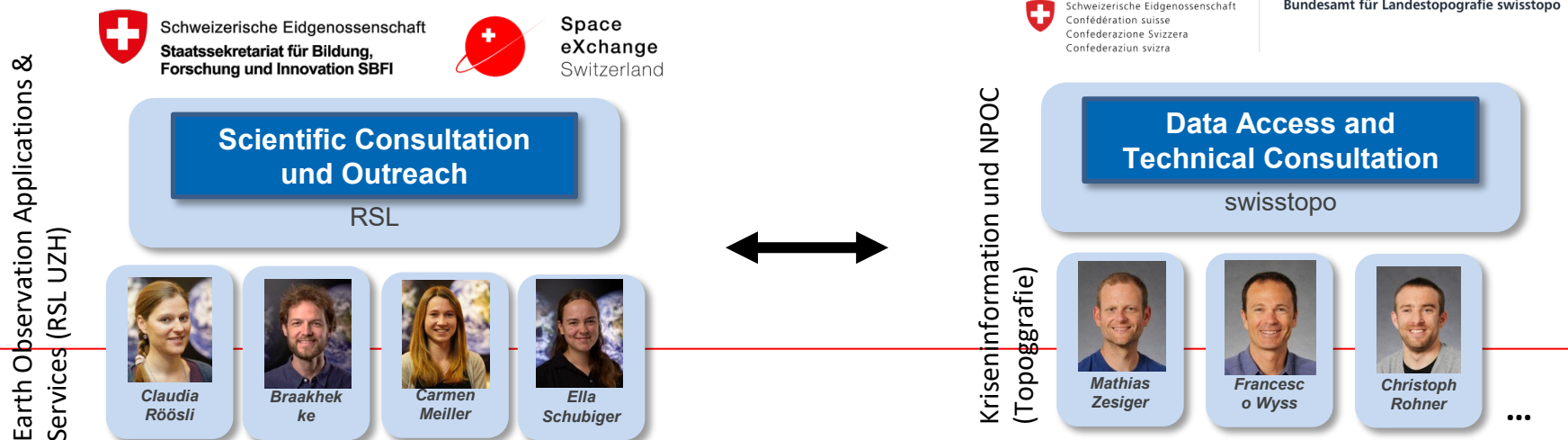
n|w

University of Applied Sciences and Arts Northwestern Switzerland
School of Engineering



- Public service to **foster the access and use of satellite data in Switzerland**
- Customer: Public administrations, academia, research institutes, companies, private persons NGOs, ...
- Free **science-based consultations**
- **For any questions, please contact the NPOC team:**

Swiss National Point of Contact for Satellite Images (NPOC)



- Public service to **foster the access and use of satellite data in Switzerland**



Swiss National Point of Contact for Satellite Images (NPOC)

What is Remote Sensing (RS)?

- Detection and monitoring of physical characteristics of an area
- Emitted or reflected radiation
- Without touching

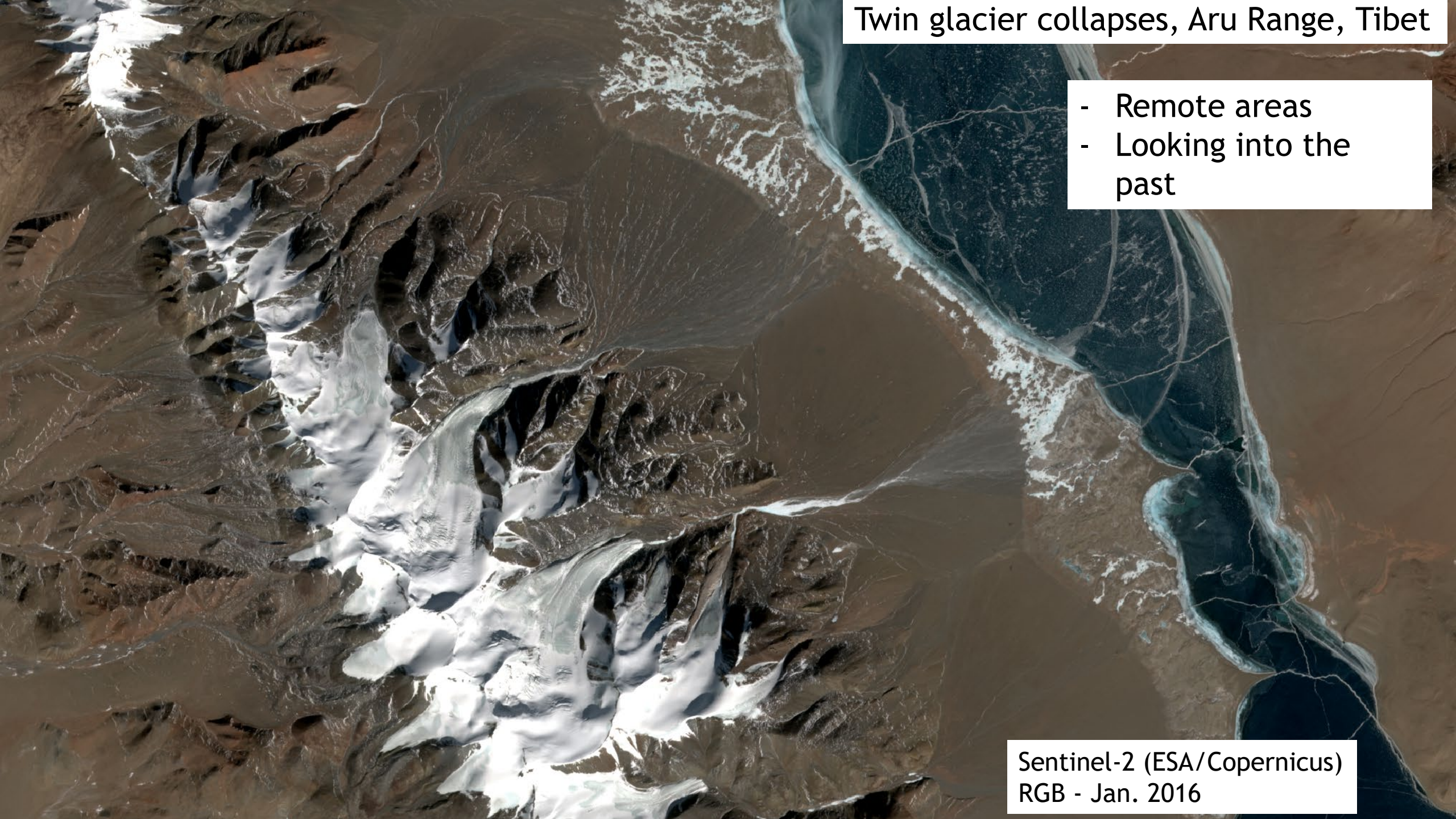
What is Earth Observation (EO)?

- Observing the Earth from space (with RS)

Twin glacier collapses, Aru Range, Tibet

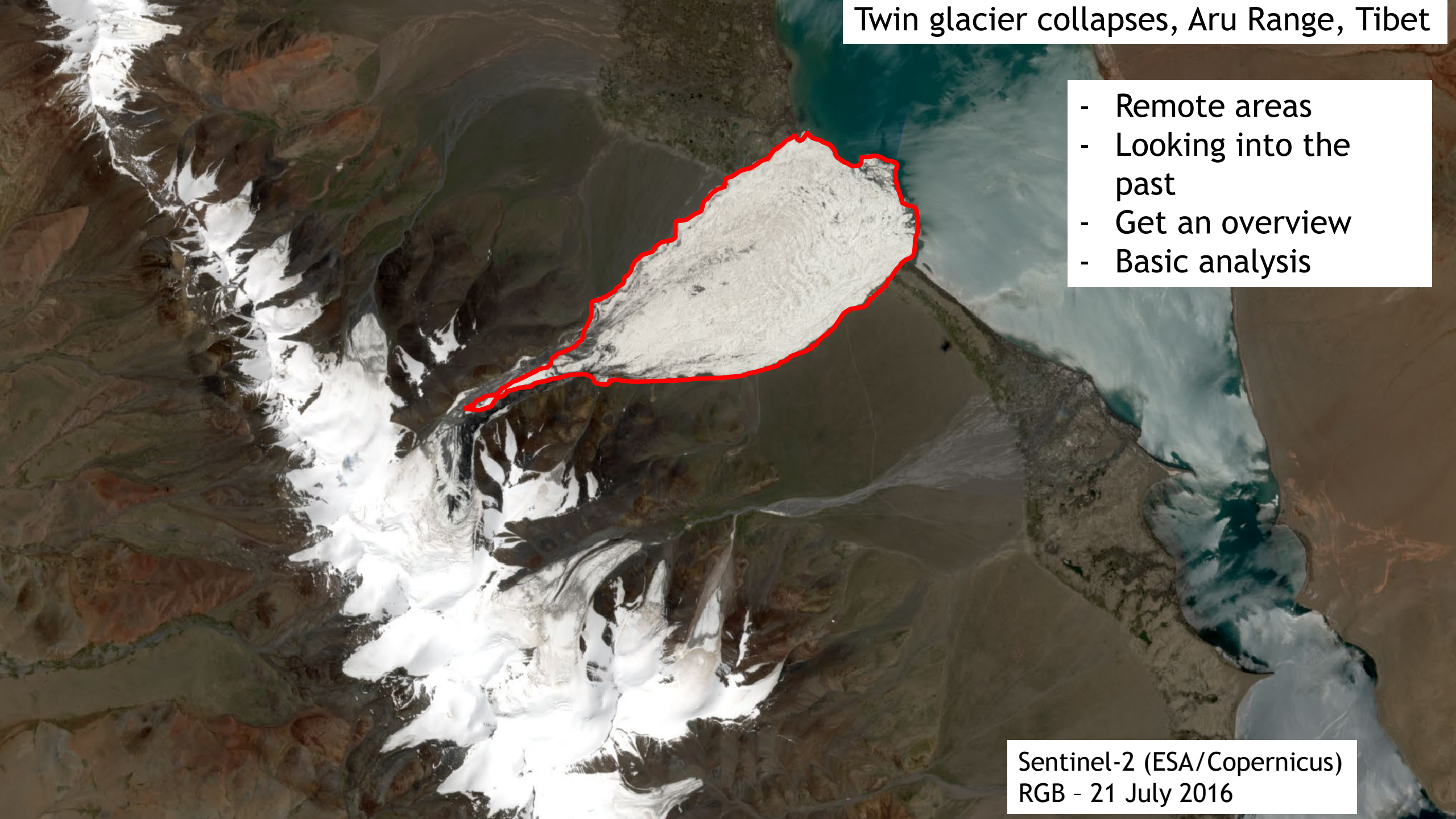
- Remote areas
- Looking into the past

Sentinel-2 (ESA/Copernicus)
RGB - Jan. 2016



Twin glacier collapses, Aru Range, Tibet

- Remote areas
- Looking into the past
- Get an overview
- Basic analysis

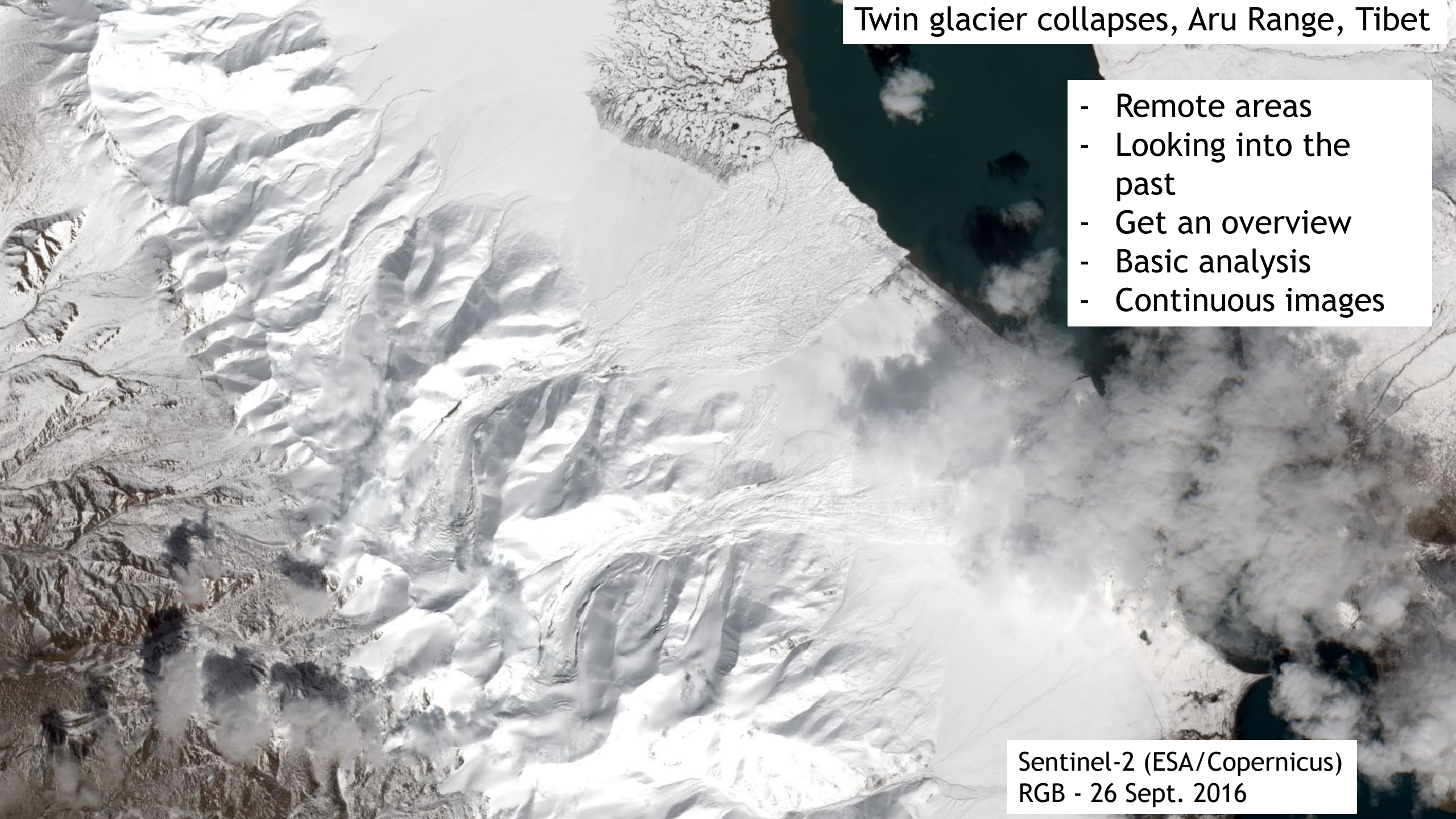


Sentinel-2 (ESA/Copernicus)
RGB - 21 July 2016

Twin glacier collapses, Aru Range, Tibet

- Remote areas
- Looking into the past
- Get an overview
- Basic analysis
- Continuous images

Sentinel-2 (ESA/Copernicus)
RGB - 26 Sept. 2016



Twin glacier collapses, Aru Range, Tibet

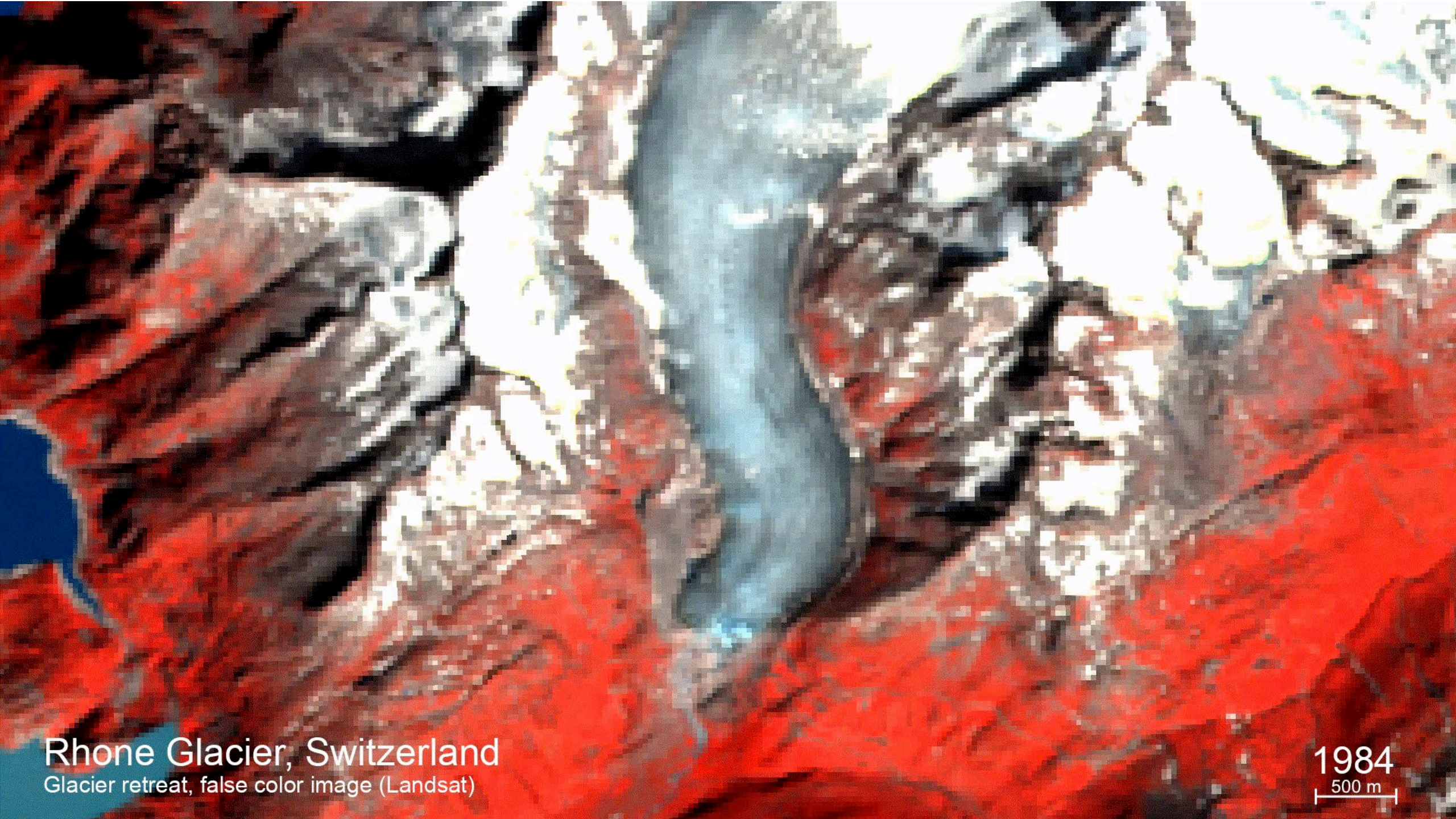
- Remote areas
- Looking into the past
- Get an overview
- Basic analysis
- Continuous images
- New perspective

Sentinel-2 (ESA/Copernicus)
SWIR - false color - 26 Sept. 2016

Twin glacier collapses, Aru Range, Tibet

- Remote areas
- Looking into the past
- Get an overview
- Basic analysis
- Continuous images
- New perspective
- Other sensors

Sentinel-1 (ESA/Copernicus)
Sept. 2016 (SAR-coherence)



Rhone Glacier, Switzerland
Glacier retreat, false color image (Landsat)

1984
500 m

VISUALIZE

SEARCH

DATE: SINGLE



< YYYY-MM-DD >

30%

Show latest date ↗

Find products for current view

CONFIGURATIONS:

Default

DATA COLLECTIONS:



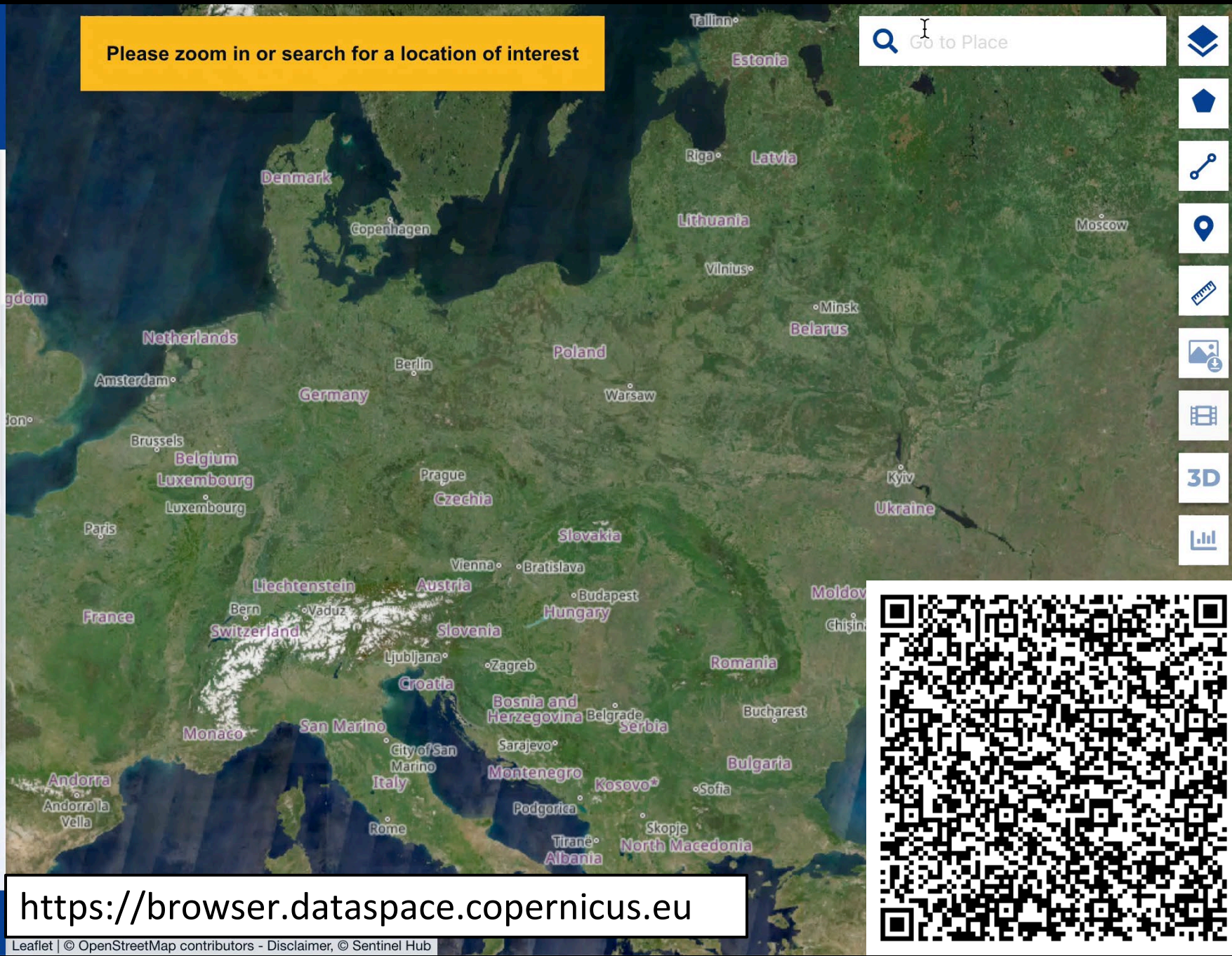
Sentinel-2

Sentinel-2 L1C

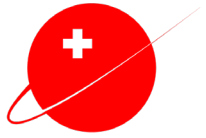
Sentinel-2 L2A

Please zoom in or search for a location of interest

Go to Place



https://browser.dataspace.copernicus.eu



Space
eXchange
Switzerland

Acquiring satellite data for research

Claudia Röögli

Head of scientific National Point
of contact for satellite data

University of Zurich

Swiss Polar Day 2024

12 Sept. 2024 – Fribourg

npoc@geo.uzh.ch



Funded by
Schweizerische Eidgenossenschaft
Confédération suisse
Confederazione Svizzera
Confederaziun svizra

Swiss Confederation

Federal Department of Economic Affairs,
Education and Research EAER
State Secretariat for Education,
Research and Innovation SERI
Swiss Space Office