

# Welcome

# SWISS POLAR INSTITUTE



Photo credits: Andrea Baccharini (Polar Access Fund grantee 2018)

# SWISS POLAR INSTITUTE

## Updates from the SPI



Photo credits: From left to right, Evan Miles, Alfonso Ferrone and Tobias Erhardt (2019 Polar Access Fund grantees)

## Funding opportunities

---

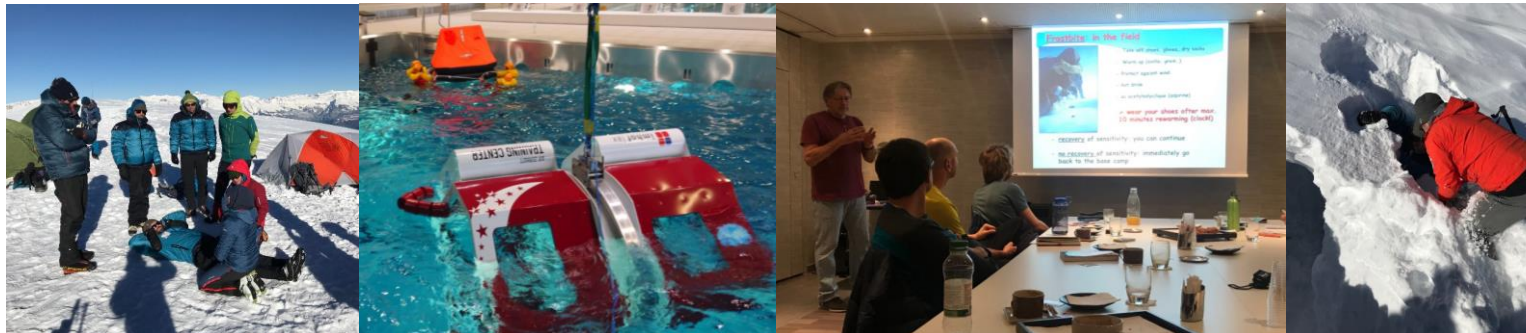
### Currently

- **Polar Access Fund:** Field trip funding for PhD students and young post-docs (annual call – opening mid-November 2020-> **deadline January 2021**)
- **SPI Exploratory Grants:** Support for logistics costs/new collaboration for polar science projects (call open now – **deadline 19 October 2020**)
- **SPI Technogrants:** Funding for development and testing of technologies for/in extreme environments (call open now – **deadline 19 October 2020**)
- Access to **international field and summer schools** (for students) – see **list**
- **PolARTs** tandem programme – pilot programme ongoing and hopefully confirmed in 2021

## Health and safety

### Services and courses for Health and Safety

- **Organisation of courses for health and safety** in polar regions and remote environments (next course: **11-12 December 2020**, Sion-Valais – then March/April 2021)
- Support and incentives for participation in **safety courses** given by providers such as Air Zermatt (HUET)
- Development of **health check processes and other field services** (e.g. field pharmacy)



## Upcoming events

---

### SPI events

- 20 November 2020 – “**Best practices for data management in the field**” – workshop for Polar Access Fund grantees (online) (few places left for external participants)
- End January 2021 - “**Planning your field activities in spite of COVID** - discuss with an expert (Prof. Blaise Genton, CHUV) and open exchange => **Interest??**”
- February 2021 (date tbc) – Annual workshop for **Social Sciences and Humanities** in polar regions
- April 2020 (date tbc) – **Swiss Polar Day 2021** hopefully in person...

# Outreach

# SWISS POLAR INSTITUTE

## Swiss Polar Class

- Programme for Swiss Primary Schools – supported in German and in French
- If you wish to contribute and participate in an intervention in school, please contact us!



## New! Flagship initiatives

### Towards Swiss polar programmes

Based on the current strengths of Switzerland in polar science, the Swiss Polar Institute has proposed four priorities for the period 2020-2025:

- Cryosphere through time – Processes, feedbacks and responses
- Carbon, nitrogen, water cycle nexus – Past, present and future
- Biodiversity and ecosystem functions
- Technology in extreme environments

SPI also outlined the need for the launch of bottom-up **Swiss Flagship programmes in polar and high-altitude regions**



# Flagship initiatives

---

## Concept:

- **Polar programme(s) for Swiss polar research**
- **Multi-annual** programmes **combining** science and technology projects from different disciplines and different groups/institutions in CH around a polar or high-altitude focus region
- **Funding** focused on field campaigns (logistics, safety, ...), data management, outreach/publication, programme coordination in order to provide a **temporary infrastructure**. Funding for analytical work and equipment on a case-by-case basis
- **International** collaboration and synergies with national/international programmes highly valued
- Integrated **data management** tools and dedicated support

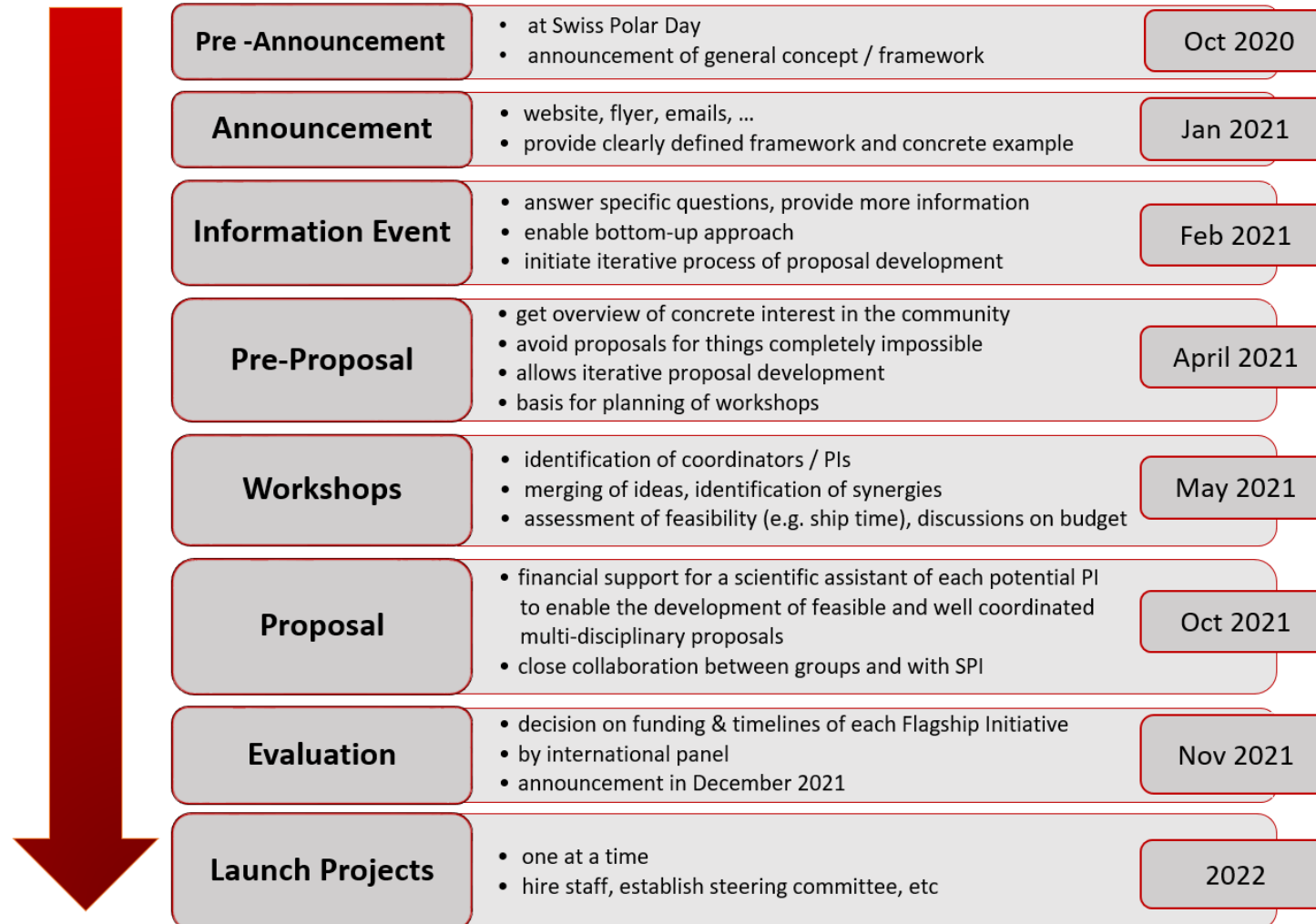


# Flagships initiatives

---

- Total **funding** level and **duration** still to be confirmed
- Launch of call for proposals foreseen in **January-February 2021**
- **Two stage proposals** (deadlines in spring and late summer) and collaborative workshops at full proposal stage
- Programmes will be selected by an **international panel** of experts following a peer review process
- Selected **programme(s)** to be announced by end 2021

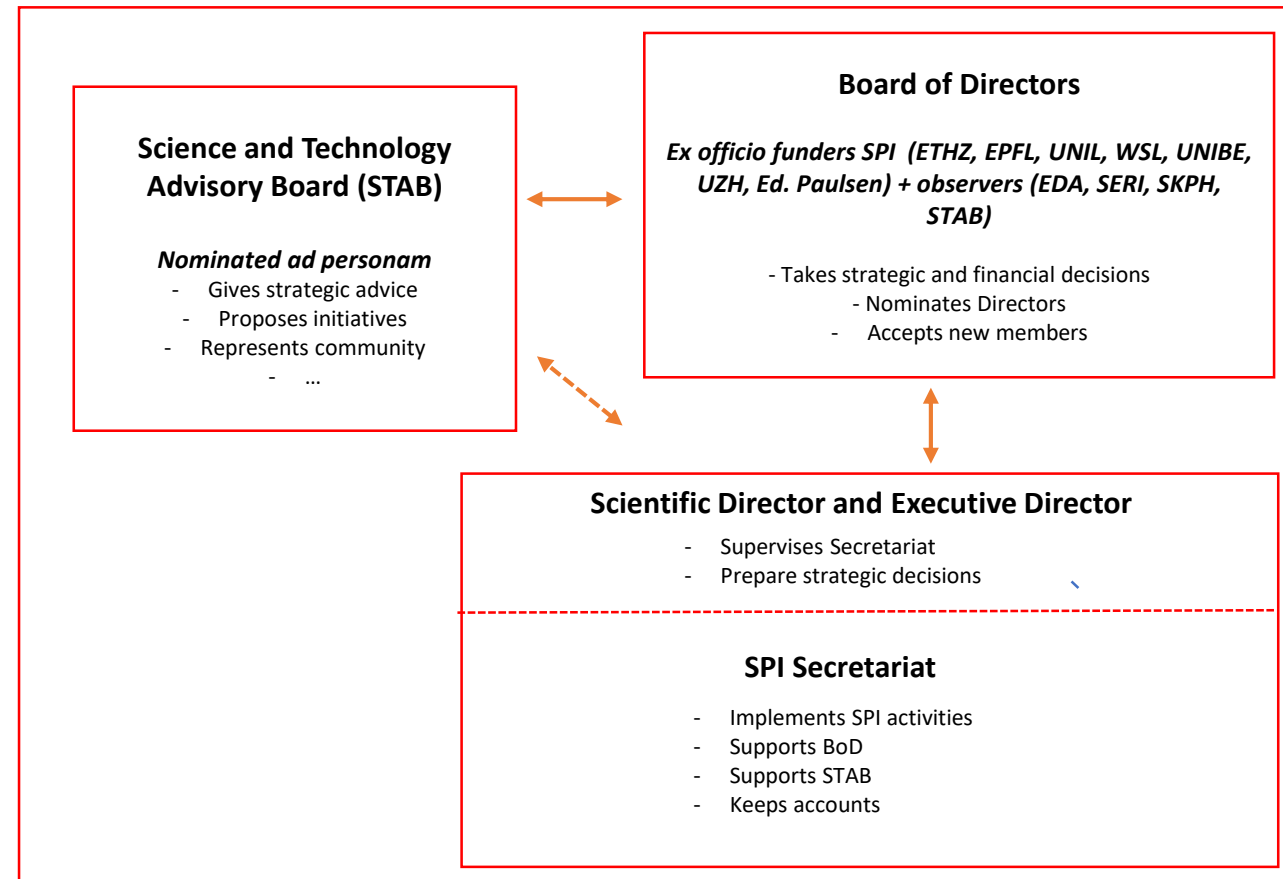
## Flagships - timeline



## A short reminder

### ... of how we work...

- STAB is your entry point
- SPI Secretariat at your disposal too!
- Board of Directors will soon launch the search for a new Scientific Director



## Introducing the new STAB

- **Rotation in spring 2020 in our Science and Technology Advisory Board (STAB)**

Gabriela Schaepman-Strub (Chair)	University of Zurich
Björn Dahlbäck (Vice Chair)	
Jane Francis	British Antarctic Survey
Philippe Gillet	EPFL
Frédéric Herman	University of Lausanne
Christian de Marliave	Editions Paulsen
Heini Wernli	ETHZ
Hubertus Fischer (SKPH delegate)	University of Bern
Patricia Holm (SKPH delegate)	University of Basel

# SWISS POLAR INSTITUTE

---

- To **stay in touch**, please do not hesitate to:
  - ✓ Follow SPI on Twitter: **@swisspolar** for all news and calls for projects
  - ✓ Check out [www.swisspolar.ch](http://www.swisspolar.ch)
  - ✓ Drop us a line if you would like to be included in our contact list for new opportunities/events
  - ✓ Write to us directly or call us for suggestions, questions, etc.

# SWISS POLAR INSTITUTE



Photo credits: Andrea Baccharini (Polar Access Fund grantee 2018)