

**New momentum for
Swiss polar science**

Online meeting
Wednesday 26 May 2021
17:00 – 18:00 CEST



Swiss Polar Institute

a New Swiss National Research Institution

26 May 2021

Welcome



Danièle Rod
Executive Director



Gabriela Schaepman-Strub
Scientific Director

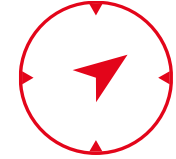
AGENDA

Agenda

- The Swiss Polar Institute
 - Remarks from the State Secretariat for Education, Research and Innovation (SERI)
 - Swiss Polar Perspectives from the Federal Department of Foreign Affairs (FDFA)
 - Swiss Polar Science in a Nutshell
 - Questions and Open Discussion
-
- Followed by informal discussions on the platform “Wonder”



The Swiss Polar Institute (SPI)



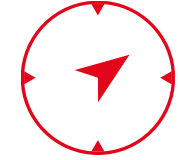
- Founded in 2016 as a **bottom-up initiative** by EPFL, ETHZ, University of Bern, Federal Institute for Forest, Snow and Landscapes (WSL), Editions Paulsen and joined by University of Lausanne and University of Zurich
- **Mission of SPI**

Support the Swiss polar research community to strengthen Swiss contributions to polar science through

 - Access to the field: Expeditions, logistics funding, ...
 - Services and courses (safety, data, etc.)
 - Community building and outreach

NEW STATUS

A Growing Institution



- **New!** Granted in 2021 the **status of Research Facility of National Importance**

Goal of today's event

- Position SPI as new potential institutional partner, spark ideas to foster cooperation between the Swiss community and international partners with SPI's support



SPI Science Plan



Science plan identified 4 core topics

1. Cryosphere through time
2. Carbon, nitrogen, water cycle nexus
3. Biodiversity and ecosystem functions
4. Technology in extreme environments

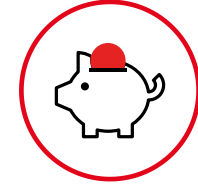
Annual Report 2020



Annual Report 2020

Teresa Jorge, Polar Access Fund 2019 grantee, comments on this photo taken on her field trip in February 2020: "An old neon orange AWI jacket, my most trusted companion during my stay in Svalbard, the moon-illuminated snow and surrounding mountains and a perfectly timed bright green aurora. This picture was taken in Ny-Ålesund, Svalbard – the most northern community (79°N) in the world that is inhabited all year round." Photo: © Raphael Köhler

Funding for Swiss-Based Researchers

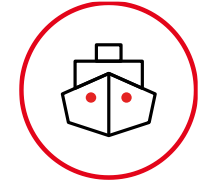


- Polar Access fund: dedicated funding for fieldwork by ECRs
- SPI Technogrants: funds dedicated to technological developments – reaching out towards new competences and private sector
- Exploratory Grants: funds for short-term opportunities and collaborations by established researchers
- But also... field schools for students, health and safety courses, etc.

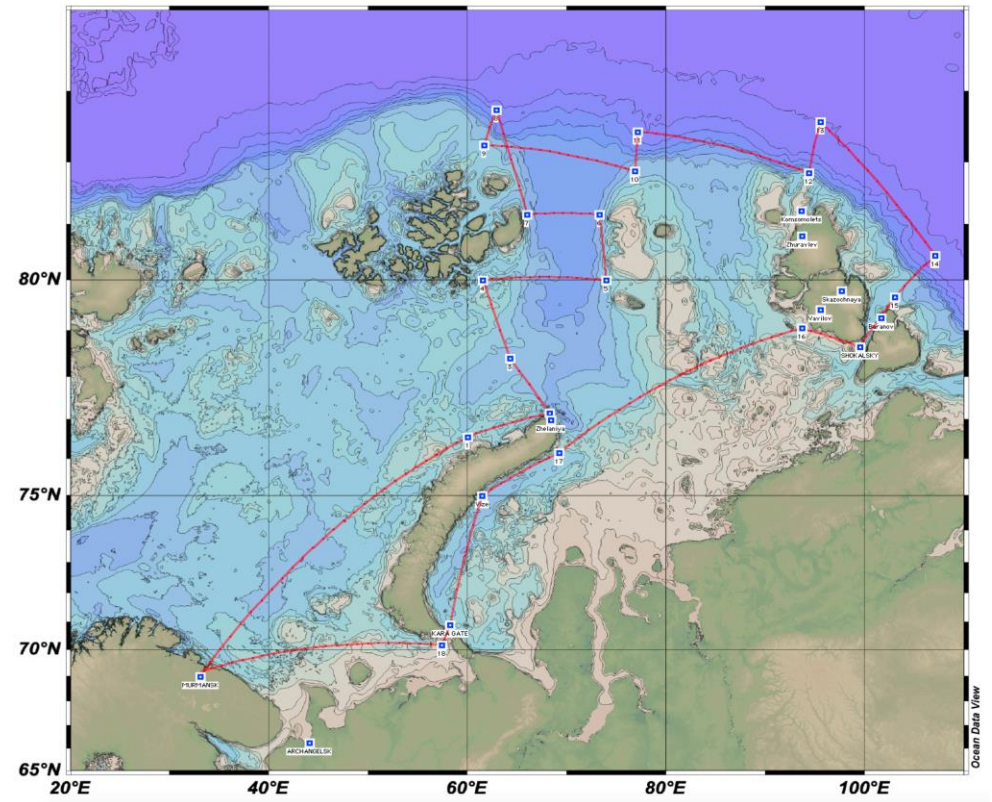


Expeditions

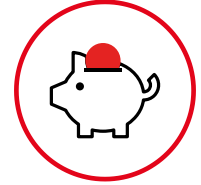
Past - ACE



Future - Arctic Century Expedition



Upcoming... SPI Flagship Initiatives



- Two flagships will be selected – up to CHF 1.5 million each
- Ambitious **multi-annual** programmes (max. 4 years) **combining** science and technology projects from different disciplines and different groups/institutions in CH around a polar or high-altitude focus region
- **Funding** focused on field campaigns (logistics, safety, ...) and data management in order to provide a **temporary infrastructure**
- **International collaboration** and synergies with national/international programmes highly valued
- Call launched 1 February 2021 – results to be announced in December 2021



Education & Arts

Swiss Polar Class



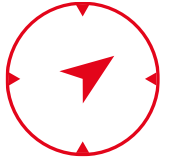
PoIARTS



International Involvement and Contributions of Switzerland

- Arctic Council (observer)
- Arctic Science Ministerial
- IASC
- SCAR
- EU-Polarnet 2
- European Polar Board
- FARO
- COMNAP





Planning for Enhanced National and International Cooperation

Vision: Contribute to polar science and knowledge through excellence and open collaboration

1. Support research on **complex questions** that require international collaboration and complex logistics.
2. Support research towards pressing problems relevant to those who are affected strongly and immediately by **changes at the 3 poles**, where strong **Swiss expertise can make a difference**.
3. Strengthen existing collaborations and networks, but also **foster novel research opportunities and scientific & societal contributions**.

What is currently NOT intended

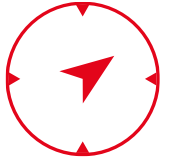
1. Signing MoUs that are not well supported by the research community and/or do not open novel research opportunities.
2. Large investments into single research infrastructures, without dedicated scientific programme attached with relevance to a broad Swiss scientific community.



Planning for Enhanced National and International Cooperation

Implementation ideas to discuss and prioritise in the coming months

1. Workshops - facilitate exchange of expertise through **bilateral or international workshops** (e.g. **natural hazards**)
2. **Information & networking service** – facilitate international access to information on Swiss science expertise and experts through the SPI website and secretariat
3. Facilitate exchange on **technology and methods** – e.g. strengthening co-design and co-production of knowledge
4. Facilitate **access to research infrastructure at 3 poles** (e.g. jointly led expeditions, contribution to international expeditions, research in Swiss extreme environments)
5. Exchange and **development of field work services** (e.g. health & safety training courses)
6. Develop the **next generation of polar scientists** (e.g. training of early career researchers through summer schools, research exchange stays)



Looking ahead

- Ambition to define a concrete but also creative set of measures at the service of the community
- Process within SPI with a very high level of priority

Please send us your ideas about relevant potential for cooperation!

In the chat or by email!

secretariat@swisspolar.ch

